


ITEM	OWNER'S MANUAL		
FOR	SAGA		
DESCRIPTION	PASSIVE OR TUBE REMOTE PREAMP		
MODEL NO	SCH-20	REVISION A	RANDOM NUMBER F
NOTES	<p>A PASSIVE RELAY-STEPPED ATTENUATOR? YES. A HYBRID TUBE BUFFER PREAMP? YES AGAIN. AND REMOTE CONTROL? YEP, THAT'S INCLUDED AS WELL. SAGA IS A SEERESS IN NORSE MYTHOLOGY, BUT THE ONLY THING WE'RE SEEING IS THE LOOK OF SHOCK ON EVERYONE'S FACE WHEN THEY DISCOVER THE PRICE. WELCOME TO SANE, AFFORDABLE HIGH END.</p>		
		SCHITT AUDIO COMPONENTS	

WELCOME TO SAGA

Saga is a no-compromise, ultra-high-end preamp cleverly disguised by its low price. You won't find any volume-control chips or other shortcuts in Saga—just uber-quality techniques as used in the most expensive audio gear. That's why it has a relay-switched stepped attenuator volume control that can be run fully passively—or connected to a unique hybrid 6SN7 tube buffer.

IN THE BOX

ONE Saga
ONE Power cord
ZERO Stick-on feet (!)
(they're pressed in)

SAFETY INSTRUCTIONS



The following is required by the roughly 9,542 government agencies and regulations we have to comply with. If you have some common sense, they should seem pretty straightforward. In any case, read these instructions before proceeding farther, follow all instructions, and heed all warnings. Or else!

1. If you don't know how to install audio devices, get a qualified professional to help.
2. Never use this device near water, and clean only with a dry cloth.
3. Assure adequate ventilation, do not block any ventilation openings, or place near heat sources.
4. Use only the supplied power cord or suitable replacement. Route cords away from traffic areas and protect them from being pinched. Unplug the cord from the outlet if the apparatus is unused for a long period of time.
5. To prevent electric shock, do not use the plug with an extension cord, receptacle, or outlet unless blades can be fully inserted.
6. Refer all servicing to qualified service personnel. Service is required when the device has been damaged, including cord or plug damage, liquid has been spilled or objects have fallen into the device, the device has been exposed to rain or moisture, does not operate normally, or has been dropped.



WARNING: TO REDUCE THE RISK OF FIRE OR ELECTRIC SHOCK, DO NOT EXPOSE THIS DEVICE TO RAIN OR MOISTURE.



Application for Council Directives 72/23/EEC
Conformity declared for EN60065, EN50082-1

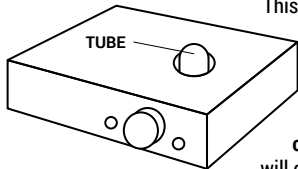
GETTING STARTED

CAUTION! Dangerous voltages inside!

1. **Before plugging in the preamp, insert the tube.** Carefully align the key in the tube base to the notch in the tube socket.



2. **Ensure tubes are well-seated.** Push down firmly until the tube is seated on the tube socket.



This may take a fair amount of force.

3. **Plug it in and turn it on.** The tube will glow after a few seconds, and the microprocessor will connect the output after about 30 seconds.

4. **Connect your sources.** Connect up to 5 sources with RCA cables to the inputs of Saga.

5. **Connect the output.** Connect the output of Saga to your amp or amps using RCA cables.

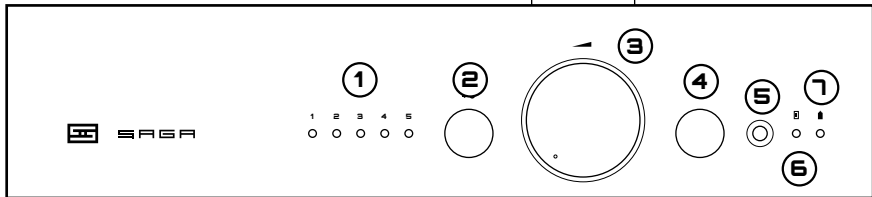
6. **Ensure the volume is turned down if you're using Saga for the first time.** You don't want any big surprises!

Replacing or Swapping Tubes

Saga accommodates any 6SN7, 6N8S or 5692 tube type. 6SL7s also work, but have higher distortion and higher output impedance.

1. **Turn off and unplug the preamp.** Wait a while for the tube to cool.
2. **Carefully extract the tube** by gently rocking it back and forth and pulling upwards.
3. **Carefully insert the replacement tube.** Align the key to the notch and press down firmly until the tube is seated.
4. **Plug the preamp back in and turn it on.**

FRONT CONTROLS



1 Input. The selected input lights up to indicate, well, the selected input. Except when the preamp is muted. Press the mute button on the remote to unmute the input if no input is lit.

2 Input Switch. Press to choose the right input.

3 Volume Knob. Turn it to the right to make the music louder. Stop before smoke comes out of your speakers.

4 Mode Select. Press to change between passive and tube hybrid buffer output.

5 IR Window. The remote “talks” to the Saga through this window. Don’t block it, unless you don’t want the remote to work.

6 Remote Indicator. When you’ve used the remote control to adjust volume, this LED will light. You’ll need to turn the

volume down below the level set by the remote in order for the knob to control volume again.

7 Passive/Buffer Indicator. This lights up when you’re using the tube buffer output. It’s off for passive output.

REMOTE CONTROL

Yes, this preamp comes with a remote control. And yes, it's a relatively simple plastic affair. Yeah, we know you want milled aluminum, but you also probably don't want to spend a fortune on a remote control either. This remote is inexpensive enough that if your dog eats it, you can simply get another one without any financial stress. It also won't kill the dog, like an aluminum remote might.

1 Input. Press this button to select the input you want to listen to. If you skip the input, keep pressing—it cycles back around.

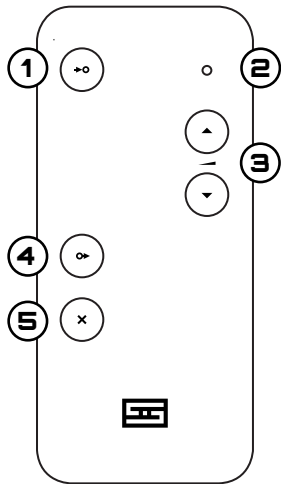
2 Remote Light. This extremely bright light was designed to irritate everyone who carps and

moans about the brightness of our LEDs. Just kidding. It lights when you use the remote. If it doesn't light, the battery is probably dead. Pull the battery out from the bottom of the remote and replace it with one of the same type.

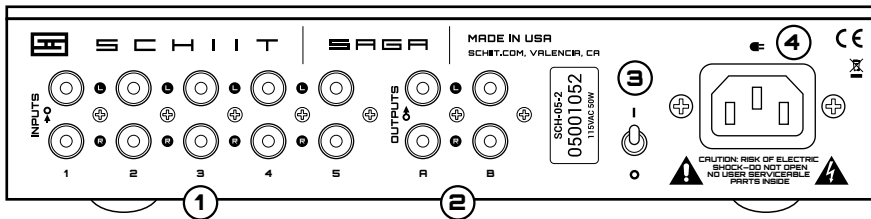
3 Volume Up/Down. Press the up arrow to turn volume up, press the down arrow to turn it down. Simple as that.

4 Output. Press to change between passive and tube hybrid buffer output.

5 Mute. Press to mute the preamp. All input lights will turn off.



REAR CONNECTIONS



1 RCA Inputs.

You can connect up to 5 inputs to Saga using RCA cables. The inputs are conveniently numbered "1" to "5" to match the front panel indicators. Select the input you want to listen to using the front panel buttons or the remote control.

2 RCA Outputs.

We've provided two sets of RCA outputs here, so you can connect to 2 amps, or an amp and a subwoofer, or you can just use a single output. You don't have to use both.

3 On-Off Switch. Up is on. Down is off. Pretty simple, right? And yes, it's on the back. If you have the preamp in a place where you can't easily reach it, just plug it in to a power strip or use a remote-controlled outlet. Yes, those are a thing.

4 AC Input. Plug the power cord in here. Plug the other end into an outlet of the correct voltage. Trying to run a 115V product on 230V will blow the fuse and generally make for a bad, bad day.

FAQ

I hear hum, what do I do?

You may have a ground loop. To fix a ground loop, try a ground loop isolator or an EbTech HumX.

There's no sound for a while after I turn Saga on.

That's perfectly normal. Saga delays the output for 20 seconds after you first turn the preamp on.

What's with the clicking noises when I turn the volume?

That's the sound of the mechanical relays in the relay-switched stepped attenuator. Also normal.

The volume knob doesn't seem to work.

When you adjust volume with the remote, you have to turn down the volume to minimum before the knob is enabled again. You know, for safety.

Can I leave Saga on all the time?

You can, but it'll dramatically shorten the tube lifespan.

Can I use both outputs at the same time?

Most of the time, yes. If you have products that short the input when turned off, then that can cause distortion.

It doesn't turn on, what do I do?

Plug it in to a different AC socket. Ensure you are not currently in a blackout. Then email us if it still doesn't work.

SPECS

Frequency Response: 20Hz-20Khz, -0.2db, 3Hz-200KHz, -3dB (active stage)

THD: <0.002%, 20Hz-20KHz, at 2V RMS (active stage)

IMD: <0.002%, CCIR (active stage)

SNR: >105db, A-weighted, referenced to 1V RMS (active stage)

Crosstalk: >-75dB, 20Hz-20KHz

Output Impedance: 180 ohms (active stage)

Gain: Approximately 1 (0dB) through either passive or active stage

Maximum Output: >10V RMS (active stage)

Volume Control: relay-switched stepped attenuator with discrete thin-film resistors, 64 1dB steps

Power Consumption: 25W typical

Size: 9" x 6" x 2"

Weight: 6 lbs

ITEM	<h1 style="text-align: center;">WARRANTY</h1>
	<p>Schiit Audio warrants to the original purchaser that the product shall be free from defects in material and workmanship for five (5) years from the date of purchase. Exceptions: tubes and remote controls. Tubes are covered by a 90-day limited warranty with the same terms. Remote controls are covered by a 1-year warranty with the same terms. If a defect covered by this warranty occurs during this warranty period, Schiit Audio will repair the defective product, free of charge. Date of purchase will be based on customer-submitted receipts, otherwise date of manufacturing will be used to determine warranty period.</p> <p>If you believe you need warranty service, CONTACT US first. There may be a simple solution to your problem. Schiit Audio products sent back to us without a RETURN AUTHORIZATION (RA) will be returned to the sender without repair. To contact us and obtain an RA, email support@schiit.com. We will respond quickly to either phone or email messages.</p> <p>WARRANTY LIMITATIONS</p> <p>THIS WARRANTY SHALL NOT APPLY IF THIS PRODUCT: (a) IS MODIFIED OR TAMPERED WITH; (b) IS DAMAGED BY NEGLIGENCE, ACCIDENT, UNREASONABLE USE, COFFEE, OR BY OTHER CAUSES UNRELATED TO DEFECTIVE MATERIALS OR WORKMANSHIP; OR (c) HAS HAD THE SERIAL NUMBER ALTERED, DEFACED OR REMOVED.</p> <p>ANY APPLICABLE IMPLIED WARRANTIES, INCLUDING WARRANTIES OF MERCHANTABILITY AND FITNESS FOR A PARTICULAR PURPOSE, ARE HEREBY LIMITED IN DURATION TO THE WARRANTY PERIOD (5 YEARS). IN NO EVENT SHALL SCHIIT AUDIO BE LIABLE FOR CONSEQUENTIAL OR INCIDENTAL DAMAGES RESULTING FROM THE BREACH OF ANY IMPLIED OR EXPRESS WARRANTIES. SOME STATES DO NOT ALLOW LIMITATIONS ON HOW LONG AN IMPLIED WARRANTY LASTS OR EXCLUSION OF CONSEQUENTIAL OR INCIDENTAL DAMAGES, SO THE ABOVE LIMITATIONS MAY NOT APPLY TO YOU.</p> <p>This warranty gives you specific legal rights. You may also have other rights which vary from state to state or province to province.</p> <p>Contact us at: Schiit Audio, 24900 Anza Drive, Suite A, Valencia, CA 91355 USA, info@schiit.com</p>
NOTES	<p>YES, ALL SCHIIT PRODUCTS ARE MADE IN THE USA.</p> <p>YES, PRIMARILY OF US-SOURCED COMPONENTS.</p> <p>YES, IT'S PRONOUNCED EXACTLY LIKE YOU THINK.</p>
<div style="display: flex; justify-content: space-between; align-items: center;">  <div style="text-align: center;"> <h1 style="font-family: monospace; letter-spacing: 0.5em;">S C H I I T</h1> </div> <div style="text-align: right;"> <p>SCHIIT.COM</p> </div> </div>	