



MANI

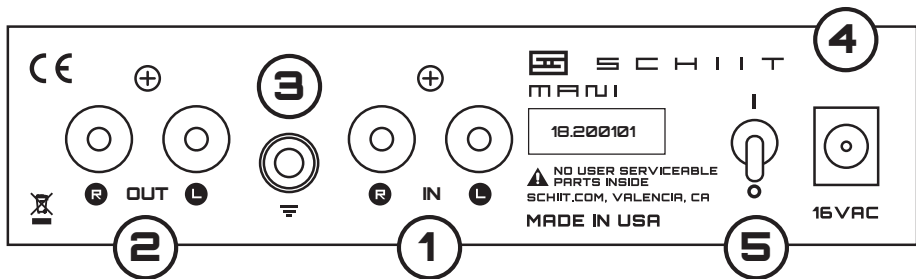
MM/MC PHONO PREAMPLIFIER

IF YOU HAVE A TURNTABLE, YOU NEED A PHONO PREAMP.
WHETHER YOU ARE USING MM OR MC CARTRIDGES,
OR DON'T KNOW WHAT THEY ARE,
YOU'RE SET WITH MANI.

MANI: PERSONIFICATION OF THE MOON IN NORSE MYTHOLOGY.
YEP, IT'S ROUND. SO ARE RECORDS. THERE YOU GO.

OWNER'S MANUAL

CONNECTIONS



1 RCA Inputs. Connect Mani's RCA inputs to your turntable, using quality shielded cables.

2 RCA Outputs. Connect Mani's RCA outputs to your preamp or headphone amp.

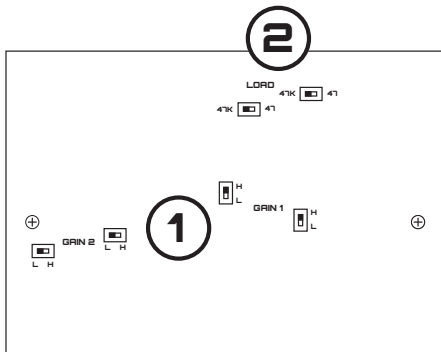
3 Ground. Connect the turntable ground to Mani's ground input, if you have hum problems.

4 Power Input. Connect the supplied 16VAC wall-wart to the Mani with the attached cord.

5 Power Switch. Turn it on and enjoy your music!

VERY IMPORTANT: Turn on Mani **FIRST**, before any other components like power amps, or else you may get some very loud pops through your system. Turn Mani off **AFTER** turning off power amps, for the same reason. Also, **DO NOT** change gain switch settings with Mani on. Turn your whole system off, change gain, and then observe the same turn-on sequence.

CONTROLS



There are no controls on the front, just a LED. When the light is on, it's on. Flip Mani over and you'll see a bunch of switches.

1 Gain Switches. These have been set in Gain 1 = L, and Gain 2 = H, which offers 42dB of gain for most moving magnet (MM) cartridges. Other gain modes include:

Gain 1 and Gain 2 both L: 30dB of gain

Gain 1 = H, Gain 2 = L: 48dB of gain

Gain 1 and Gain 2 both H: 59dB of gain

2 Load Switches: Use 47 for moving coil (MC), or 47K for MM cartridges. Unknown cartridge? Try 47 first. If your sound fades to almost nothing, set it back to 47K.

If the sound is distorted, one or more of the gain stages is overloading. Switch them to "L" until the distortion goes away. Set both switches in the same position (L, H, or 47, 47K.)

2-YEAR LIMITED WARRANTY

Schiit Audio warrants to the original purchaser that this product shall be free from defects in material and workmanship for two (2) years from the date of purchase. If a defect covered by this warranty occurs during this period, Schiit Audio will repair the defective product, free of charge. Date of purchase will be based on customer receipts, otherwise date of manufacturing will be used.

If you believe you need warranty service, contact us first. Schiit Audio products sent back to us without a Return Authorization (RA) will be returned to the sender without repair. To contact us and obtain an RA, email info@schiit.com.

Warranty Limitations. This warranty shall not apply if a product: (a) is modified or tampered with; (b) is damaged by negligence, accident, unreasonably use, or other causes unrelated to defective materials or workmanship, or (c) has had the serial number altered or removed.

Any implied warranties, including warranties of merchantability and fitness for a particular purpose, are hereby limited in duration to the warranty period of 2 years. In no event shall Schiit Audio be liable for consequential or incidental damages resulting from the breach of any implied or expressed warranties. Some states do not allow these limitations, so they may not apply to you. You may also have other rights which vary from state to state or province to province.



Application for Council Directives 72/23/EEC
Conformity declared for EN60065, EN50082-1



S C H I I T

IN THE BOX

- (1) Mani
- (1) Wall-Wart
- (0) Records
- (0) Backstage passes
- (0) Prestige
- (0) Clingy jeans
- (1) Cheap plastic bag

SCHIIT.COM
INFO@SCHIIT.COM