



SAGA+

PASSIVE OR TUBE REMOTE PREAMP

A PASSIVE RELAY-STEPPED ATTENUATOR? YES.
A HYBRID TUBE BUFFER PREAMP? YES AGAIN.
AND REMOTE CONTROL? YEP, THAT'S INCLUDED AS WELL.
SAGA IS A SEERESS IN NORSE MYTHOLOGY,
BUT THE ONLY THING WE'RE SEEING IS THE LOOK OF SHOCK
WHEN YOU DISCOVER THE PRICE OF THIS GREAT LITTLE PREAMP.

OWNER'S MANUAL

INTRODUCTION

Saga+ is a no-compromise, ultra-high-end preamp cleverly disguised with a low price. You won't find any volume-control chips or other shortcuts in Saga—just uber-quality techniques as used in the most expensive audio gear. That's why it has a relay-switched stepped attenuator volume control that can be run fully passively—or connected to a unique hybrid 6SN7 tube buffer.

WHAT'S IN THE BOX

- (1) Saga+
- (1) Power cord
- (1) 6N8S or 6SN7 tube
- (0) Stick-on feet (they're pressed in!)



The following is required by the roughly 9,542 government agencies and regulations we have to comply with. If you have some common sense, they should seem pretty straightforward. In any case, read these instructions before proceeding farther, follow all instructions, and heed all warnings. Or else!

1. If you don't know how to install audio devices, get a qualified professional to help.
2. Never use this device near water, and clean only with a dry cloth.
3. Assure adequate ventilation, do not block any ventilation openings, or place near heat sources.
4. Use only the supplied power cord or suitable replacement. Route cords away from traffic areas and protect them from being pinched. Unplug the cord from the outlet if the apparatus is unused for a long period of time.
5. To prevent electric shock, do not use the plug with an extension cord, receptacle, or outlet unless blades can be fully inserted.
6. Refer all servicing to qualified service personnel. Service is required when the device has been damaged, including cord or plug damage, liquid has been spilled or objects have fallen into the device, the device has been exposed to rain or moisture, does not operate normally, or has been dropped.



WARNING: TO REDUCE THE RISK OF FIRE OR ELECTRIC SHOCK, DO NOT EXPOSE THIS DEVICE TO RAIN OR MOISTURE.

GETTING STARTED

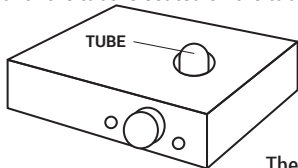
CAUTION! Dangerous voltages inside!

1. Before plugging in the preamp, insert the tube.

Carefully align the key in the tube base to the notch in the tube socket.



2. Ensure tubes are well-seated. Push down firmly until the tube is seated on the tube socket. This



may take a fair amount of force.

3. Plug it in and turn it on.

The tube will glow after a few seconds, and the microprocessor will connect the output after about 60 seconds.

4. Connect your sources. Connect up to 5 sources with RCA cables to the inputs of Saga+.

5. Connect the output. Connect the output of Saga+ to your amp or amps using RCA cables.

6. Ensure the volume is turned down if you're using Saga for the first time. You don't want any big surprises!

Replacing or Swapping Tubes

Saga accommodates any 6SN7, 6N8S or 5692 tube type. 6SL7s also work, but have higher distortion and higher output impedance.

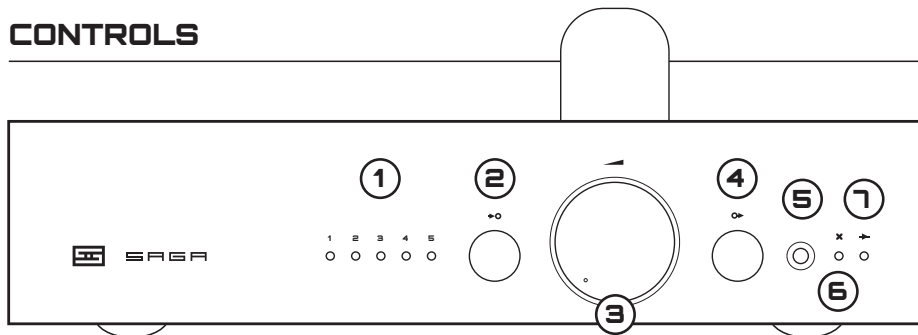
1. Turn off and unplug the preamp. Wait a while for the tube to cool.

2. Carefully extract the tube by gently rocking it back and forth and pulling upwards.

3. Carefully insert the replacement tube. Align the key to the notch and press down firmly until the tube is seated.

4. Plug the preamp back in and turn it on.

CONTROLS



1 Input. The selected input lights up to indicate the selected input. Pretty simple, right?

2 Input Switch. Press to choose the input you want to listen to.

3 Volume Knob. Turn it to the right to make the music louder. Stop before smoke comes out of your speakers.

4 Mode Select. Press to change between passive and tube hybrid buffer output.

5 IR Window. The remote “talks” to the Saga+ through this window. Don’t block it, unless you don’t want the remote to work.

6 Mute Indicator. When Saga+ is muted, this LED will turn on. Saga is muted for 60 seconds on first turn-on. You can also mute at any time using the remote control.

7 Passive/Buffer Indicator. This lights up when you’re using the tube buffer output. It’s off for passive output.

REMOTE CONTROL

Yes, this preamp comes with a remote control. Unlike earlier Sagas, this is now a fancy milled aluminum model. It's still inexpensive to replace in case you lose it or want another one, however.

1 Input. Press this button to select the input you want to listen to. If you skip the input, keep pressing—it cycles back around.

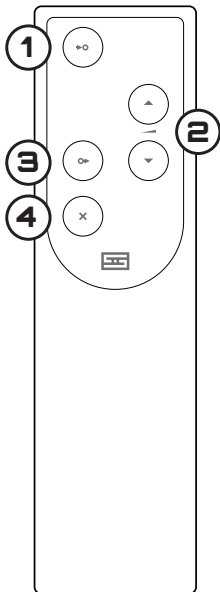
2 Volume Up/Down. Press the up arrow to turn volume up, press the down arrow to turn it down. Simple as that.

3 Output. Press to change between passive and tube hybrid buffer output.

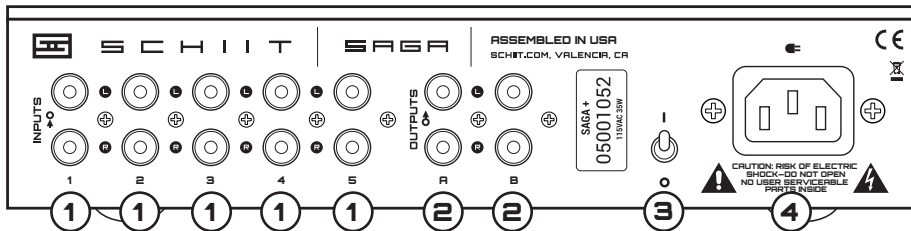
4 Mute. Press to mute the preamp.

Changing the Battery

1. Flip the remote over to reveal a single hole on the back.
2. Push the remote open by inserting the end of an open paper clip into the hole in the back and pushing firmly. It's held together with magnets.
3. Replace the battery inside with one of the same type.
4. Reassemble the remote by first inserting the clear LED in the front, then dropping the panel down onto the matching magnets. Press down gently to pop the panel in place.



CONNECTIONS



1 RCA Inputs.

You can connect up to 5 inputs to Saga+ using RCA cables. The inputs are conveniently numbered "1" to "5" to match the front panel indicators. Select the input you want to listen to using the front panel buttons or the remote control.

2 RCA Outputs.

We've provided two sets of RCA outputs here, so you can connect to 2 amps, or an amp and a subwoofer, or you can just use a single output. You don't have to use both.

3 On-Off Switch. Up is on. Down is off. If you have the preamp in a place where you can't easily reach it, just plug it in to a power strip or use a remote-controlled outlet. Yes, those are a thing.

4 AC Input. Plug the power cord in here. Plug the other end into an outlet of the correct voltage. Trying to run a 115V product on 230V will blow the fuse and generally make for a bad, bad day.

FAQ

I hear hum, what do I do?

You may have a ground loop. To fix a ground loop, try a ground loop isolator or an EbTech HumX.

There's no sound for a while after I turn Saga+ on.

That's perfectly normal. Saga+ delays the output for 60 seconds after you first turn the preamp on to help prevent loud noises during start-up.

What's with the clicking noises when I turn the volume?

That's the sound of the mechanical relays in the relay-switched stepped attenuator. This is totally normal.

I'm not getting any sound output, but the lights are on.

Is the mute light on? If so, the preamp is muted. Unmute the preamp using your remote control. Otherwise, make sure you're on the correct input and the volume is turned up.

Can I leave Saga+ on all the time?

You can, but it'll dramatically shorten the tube lifespan. The tube is on whenever Saga+ is on. Sorry, no fancy tube shutdown here like Freya+.

Can I use both outputs at the same time?

Most of the time, yes. If you have products that short the input when turned off, then that can cause distortion.

I have the volume all the way down and still hear faint music.

Yes, that is normal with a relay attenuator. If it's bothersome, hit the Mute button on the remote to completely mute the preamp.

It doesn't turn on, what do I do?

Plug it in to a different AC socket. Ensure you are not currently in a blackout. Then email us if it still doesn't work.

WARRANTY

Schiit Audio warrants to the original purchaser that the product shall be free from defects in material and workmanship for five (5) years from the date of purchase. Exceptions: tubes and remote controls. Tubes are covered by a 90-day limited warranty with the same terms. Remote controls are covered by a 1-year warranty with the same terms. If a defect covered by this warranty occurs during this warranty period, Schiit Audio will repair the defective product, free of charge. Date of purchase will be based on customer-submitted receipts, otherwise date of manufacturing will be used to determine warranty period.


If you believe you need warranty service, **CONTACT US first**. There may be a simple solution to your problem. Schiit Audio products sent back to us without a RETURN AUTHORIZATION (RA) will be returned to the sender without repair. To contact us and obtain an RA, email info@schiiit.com. We will respond quickly to either phone or email messages.

WARRANTY LIMITATIONS

THIS WARRANTY SHALL NOT APPLY IF THIS PRODUCT: (a) IS MODIFIED OR TAMPERED WITH; (b) IS DAMAGED BY NEGLIGENCE, ACCIDENT, UNREASONABLE USE, COFFEE, OR BY OTHER CAUSES UNRELATED TO DEFECTIVE MATERIALS OR WORKMANSHIP; OR (c) HAS HAD THE SERIAL NUMBER ALTERED, DEFACTED OR REMOVED.

ANY APPLICABLE IMPLIED WARRANTIES, INCLUDING WARRANTIES OF MERCHANTABILITY AND FITNESS FOR A PARTICULAR PURPOSE, ARE HEREBY LIMITED IN DURATION TO THE WARRANTY PERIOD (5 YEARS). IN NO EVENT SHALL SCHIIT AUDIO BE LIABLE FOR CONSEQUENTIAL OR INCIDENTAL DAMAGES RESULTING FROM THE BREACH OF ANY IMPLIED OR EXPRESS WARRANTIES. SOME STATES DO NOT ALLOW LIMITATIONS ON HOW LONG AN IMPLIED WARRANTY LASTS OR EXCLUSION OF CONSEQUENTIAL OR INCIDENTAL DAMAGES, SO THE ABOVE LIMITATIONS MAY NOT APPLY TO YOU.

This warranty gives you specific legal rights. You may also have other rights which vary from state to state or province to province.

 This product is in compliance with standards and regulations of the European Community.



S C H I I T

SCHIIT.COM
INFO@SCHIIT.COM